

Hugh Cameron
Effie McLean
(Tiree|Scotland)

John Cameron
Catherine Black
(Tiree Scotland)

Duncan Cameron
Christy MacLean
(Emmigrtd to Canada)

All below at Fergus

Hector Cameron
(Emmigrtd to Canada)
Phebe Cameron

1850
Phebe
<<<<<<<<
(Effie)

Donald
John
(Ian)

Alexander
Mary
Christina
MacQuarrie

Hugh
Christine
(Teen)
Lizzy
Christine?

Christina

Alexander

*on Conrad
with Donald*

Duncan Sandy

Hugh
Jessie
Edith

Hugh [my dad]
Carolyn

Hugh [me]
(Sandy)
Doreen

Hugh [my son]
(Andy)

CHRISTY or CHRISTIN.
MRS. DUNCAN Cameron
CHRISTINA McLean.
WITH FAMILY
CAME TO TIOHA
TP. IN 1849.

BORN. 1st Time AT
CORNAIG MORE. SEPT. 25/
1814 DIED WELL. PLACE
IN WELLINGTON COUNTY
JAN 28 - 1902

BURIED IN FERGUS
CEMETRY BY HER DAUGHTER
MARY GOW.

AFTER A
87 YRS 4 MONTHS ~~HARD~~
DIFFICULT LIFE

CHRISTINE McLean
BORN ON THE 15th
SEPT. 25 1814
OF TIOHA. WIFE OF
DUNCAN
~~the~~ Cameron

Great Grand
Father of McLean
of Hugh Cameron's Family
at 1845
BORN SEPT. 25 CORNAIG MORE, TIOHA
DIED JAN 28 WELL. Co. HOME.
1902. 87 YRS 4 MO.
DUNCAN BORN 3/10/1795
SON OF Hugh & EFFIE
Hugh was a wheelwright
by Trade Tioha Tioha

Jason A. Hubbard got a picture
BUT STILL HAS HIS MOTHER
HIS DAD. MARY SAUNDERS'S
PICT.



Marriage

3rd MAY 1798 Alexander Cameron Effy Campbell Cornaigmore

Children

Mar: 31/12/1828. David Macleod Bolephuil. and Catherine Black Bolephuil.

Bath: 27/11/1829. John Macleod, Donald Macleod Bolephuil & Catherine Black. Relict of the deceased Donald Macleod late father there.

2nd Mar of Catherine Black: John Cameron Bolephuil Boatman 12/12/1838 and Catherine Black Bolephuil.

Son Donald: Donald Cameron 16/5/1833 to John Cameron Bolephuil Catherine Black wid'rs. of Bolephuil. Hugh Cameron crafter Bolephuil. Sponsor. * Bolephuil Cath Black

Son Hector: Hector Cameron. John Cameron. Boatman. 14/3/39. If we be his father's sponsor.

841 Cameron Bolephuil.

412 K.D.	John Black	60	Crafter	Bolephuil	Yes
	Catherine Cameron	30			"
	Donald	6			"
	Hector	4			"
	Andrew Caldwell	25	Agreement	Bolephuil	"
	Isabella	25			"

Cath. Mar. to John Cameron. 12/12/1838

H. Donald 16/5/1833 and Hector (31/7/1833) (Bapt. date)

14/3/1839.

2019.107.3

OPR Tyne Baptism 1766-1800 - (K.D.)

14 Jan. 1770 Niel Brown Donald Brown. Hinapoll
" " Isobel Mac Donald, Macdonald "

12 Feb 1770 Douglas MacCallum, D? MacCallum "

13 April " Alex MacArthur John MacArthur Hinapoll
" " " " " "

20 April " Hinapoll.

18 Sept "

John
Reel





Wellington Road 19

Anderson St N

Dianne Crescent

Sunnybale Crescent

19

Belwood Rd

St George St E

Gow St

Atchison Ln



St Andrew St E

Anderson St S

Lamond St

Barker St

Lamond St



18

Tom St

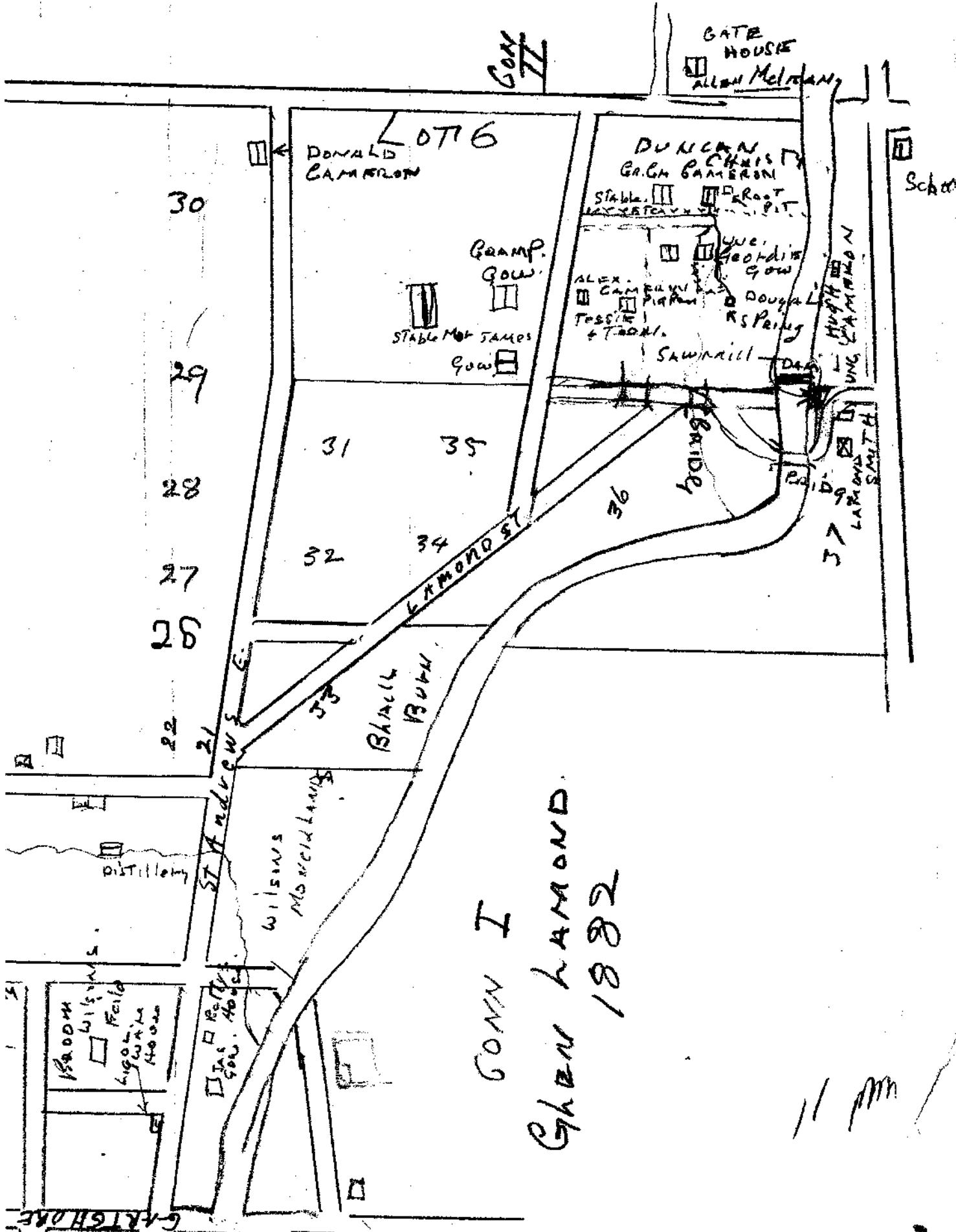
St Andrew St E

Mill St E

George St E

Gartshore St

Wellington Road 18



GANN I

GATE HOUSE
ALLEN McLEOD

LOT 6

DONALD CAMERON

DUNCAN G. CAMERON

Stable Root

GRAMP. GOW

STABLE FOR JAMES GOW

ALEX. CAMERON
Tessie & Tom
Douglas R Spring
Sawmill

HUGH CAMERON

School

30

29

28

27

26

22

31

35

32

34

36

37

ST ANDREWS

LAMPOND ST

BLACK BURN

WILSONS MORRISLAND

DISTILLERY

BRADY WILSONS
Lignite House

W. GOW HOUSE

GANN I
GIBB LAMPOND
1882

GARTSHORE

614

ALLAN McLENNAN

LOT 6

DONALD CAMERON

DUNCAN CHRISTY
GEO. CAMERON

Stable, Root
PIT.

CAMP
GOW.

UNC. GEORGE
GOW

STABLE FOR JAMES
GOW

ALEX. CAMERON
PIT
+ T. DONN.

DOUGLAS
R. SPRING

SAWMILL

DAM

HUGH CAMERON
UNC. CAMERON

31

35

36

32

34

Bridge

HUGH CAMERON
UNC. CAMERON

Sch



- 076

DN


DUNCAN
CHRISTY
GR. GR CAMERON

Stable.    ROOT
PIT.

CAMP.
GOW.



STABLE FOR JAMES

GOW 

ALEX.
CAMERON
PIG PEN
TOSSE
& TOON.

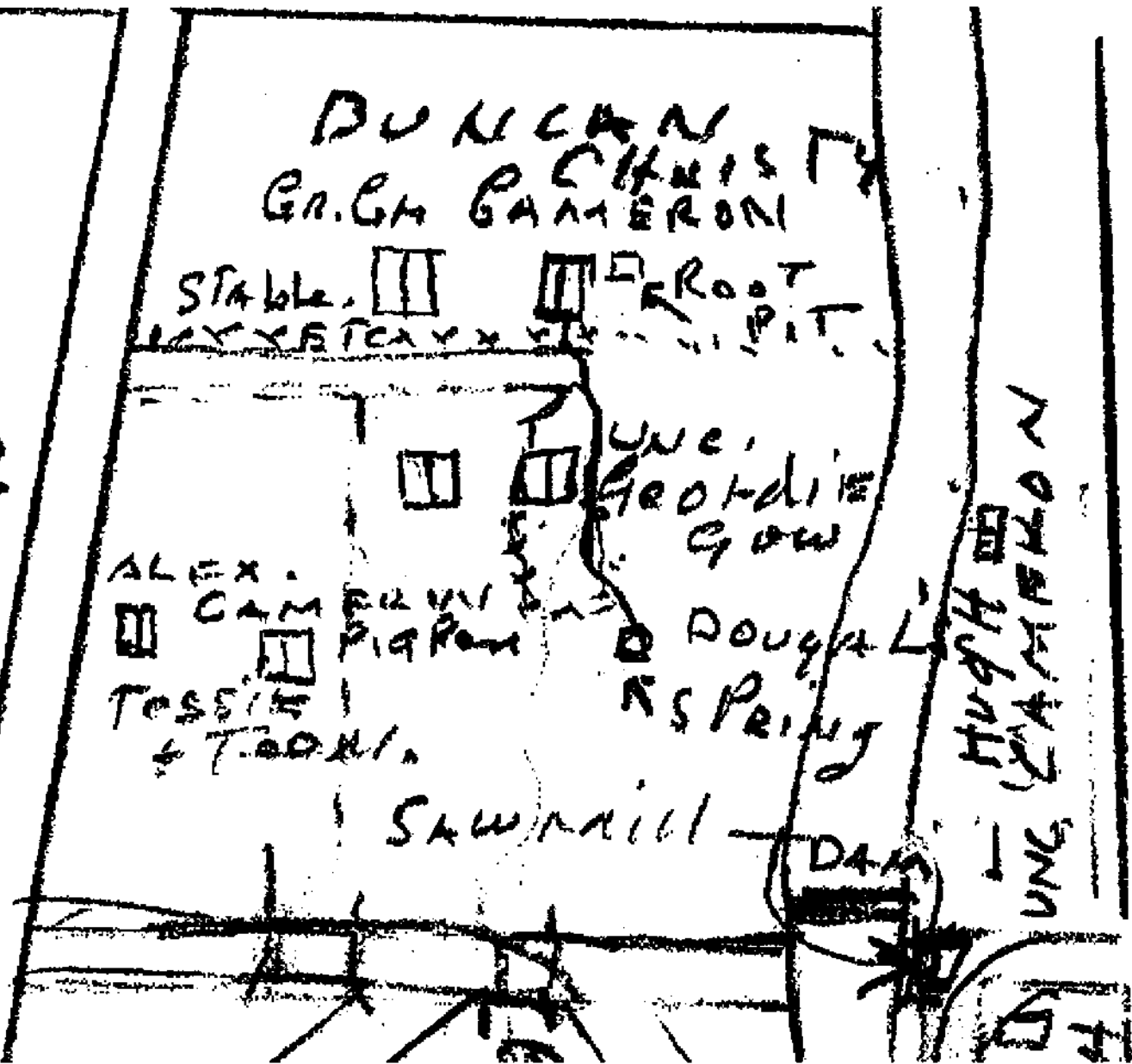
UNC.
Geordie
GOW

DOUGLAS
AS PRING

Sawmill

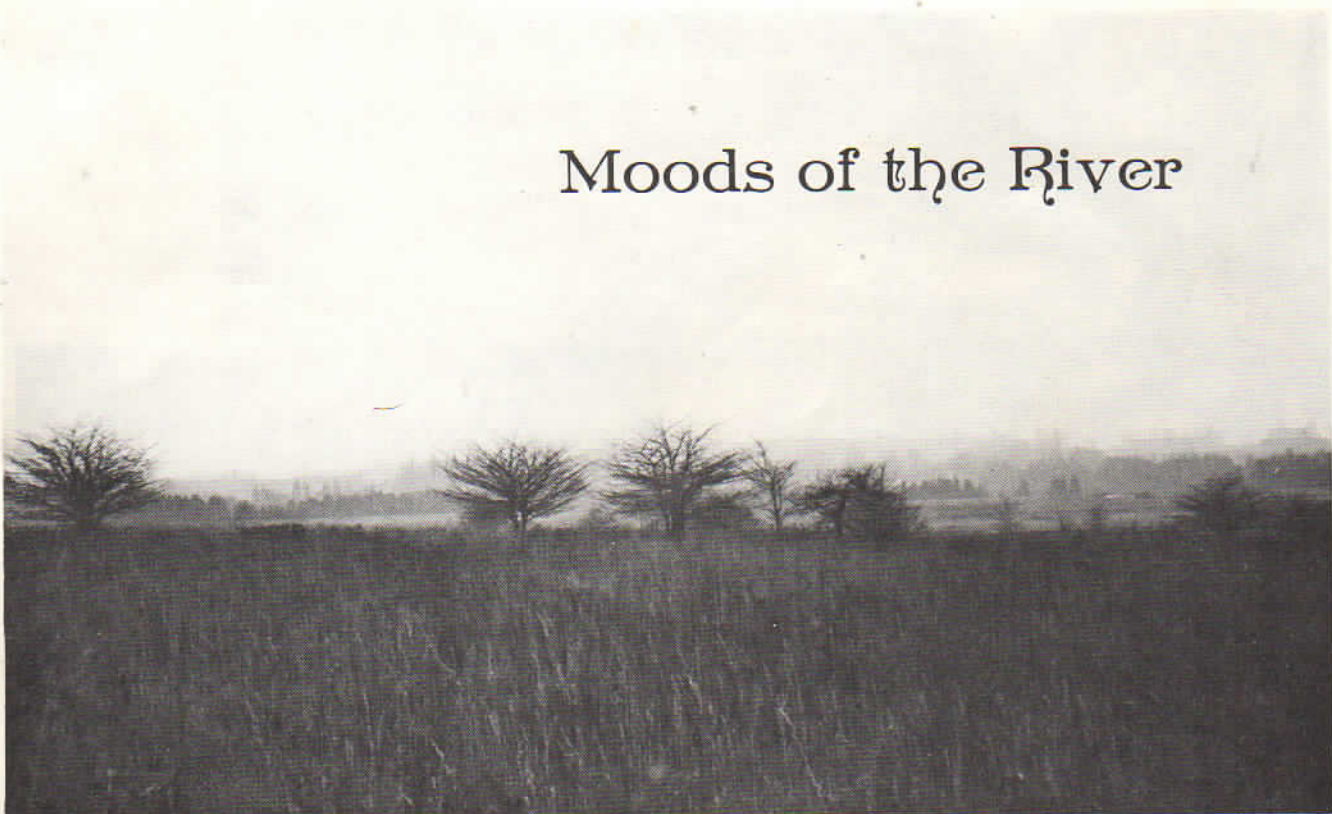
DAM

HUGH
CAMERON
UNC.





Moods of the River



Glen Lamond Flats c1982

2019.107.3